

# Concord Soccer Association Newsletter Winter 2009



P.O. Box 7063 • Wilmington, DE 19803 • (302) 479-5030 • [www.concordsoccer.com](http://www.concordsoccer.com)

## A Message from the President

*John Weaver, President, Concord Soccer Association*

At the time this newsletter is going to press, I am anticipating the Coaching Clinic put on by our new Director of Coaching, Fran Kulas. Many of our coaches are attending. There is no cost for a Concord coach, or a parent considering coaching, to participate in the clinic. This is one way Fran is giving our coaches more tools to increase our players' enjoyment of the game. I recommend that all coaches take advantage of any clinic Fran offers. You, as a coach, will feel more confident and the additional skills that you can pass on to the kids can only make them better players.

I am also anticipating **Field Fest III**. I have already sent in my ticket money. I am bragging, but no one puts on a better party than Concord Soccer. Field Fest has become a statewide soccer phenomenon. Be there or be square!



CONCORD SOCCER ASSOCIATION PRESENTS....

## 2009 Summer Soccer Camps

*Directed by Fran Kulas, "A" Licensed CSA Director of Coaching and Assistant Coach for the USA U14 & U15 National Teams*

**Kiddie Kickers Camp #1 – June 8-12 (9am-NOON)**  
for Boys and Girls Birth Years 2001 – 2005

**Kiddie Kickers Camp #2 – July 6-10 (5-8pm)**  
for Boys and Girls Birth Years 2001 – 2005

**Player Development Camp – June 8-12 (5-8pm)**  
for Boys and Girls Birth Years- 2000 – 1995

**Goalkeeper & Striker Camp – June 15-19**  
Boys (9am-NOON) & Girls (5-8pm)  
for Birth Years 2000 and older

**Advanced Skills Camp – June 22-26**  
Boys (9am-NOON) & Girls (5-8pm)  
for Birth Years 2000 and older

Customized Team Camps Available Upon Request!

**Discounts available for early registration  
(prior to April 1<sup>st</sup>) and sibling/multi-camp  
registrations!**



To request a brochure and to learn more about our unparalleled Coaching Staff and facilities, contact Fran Kulas at [frankulas@comcast.net](mailto:frankulas@comcast.net) or 302-373-9655

OR

Visit [www.concordsoccer.com](http://www.concordsoccer.com)



## Inside this issue:

**CSA Board of Directors  
and Key Contacts**

Page 2

**Field Construction  
Update**

Page 2

**Capital Campaign Update**

Page 3

**Concord U13 United Girls  
Help Delaware Food Bank**

Page 3

**Girls & Boys Representative  
Team News**

Page 4

**Soccer Development  
Program News**

Page 5

**New On-Line Registration  
Process Starts Spring 2009**

Page 5

**Soccer Development Program  
Spring Season Information**

Page 5

**Improving Field Vision  
and Awareness**

Pages 6 - 7

**Field Fest III**

Page 8



## Concord Soccer Association Board of Directors

**President** - John Weaver  
weavercw@aol.com

**Vice President** – Darryl Huber  
dhuber@bfrich.com

**Treasurer** – Dan Hammond  
danandsueh@comcast.net

**Secretary** – Imogen Ragone  
ragone01@comcast.net

**Director** – Anne Connolly  
colmanne@comcast.net

**Director** – Bruce Haberman  
bhabe2@comcast.net

**Director** – Ed Judge  
e\_judge@verizon.net

**Director** – Chris Lee  
clee200@comcast.net

**Director** – Adam Raben  
rabemd@verizon.net

**Director** – Amy Sullivan  
sullivangang@hotmail.com

**Director** – William Yemc  
yemc@rif.com

### Key Contacts

**Director of Coach and Player Development**  
Fran Kulas, frankulas@comcast.net

**Soccer Development Program (SDP) Coordinator**  
Chris Lee, clee200@comcast.net

**Girls Representative Program Coordinator**  
Open

**Boys Representative Program Coordinator**  
Bruce Haberman, bhabe2@comcast.net

**Adult Soccer Coordinator**  
Barbara Kirsch, bknjul@verizon.net

**SDP Referee Assignor**  
Anne Connolly, colmanne@comcast.net

**Representative Program Referee Assignor**  
Scott Young, scottyoung1@comcast.net

**Webmaster**  
Ed Judge, e\_judge@verizon.net

**Newsletter Editors**  
Laura Hagood, hagoodlb@comcast.net  
Imogen Ragone, ragone01@comcast.net

## Field Construction Update

Dan Hammond, CSA Treasurer



The grass is growing!! Well actually it is not growing right now as I am writing this and the temperature outside is in the 30's, but it was growing. Our primary contractor has completed the field grading, retaining wall construction, water management features and has demobilized from the site. Thanks to our electrical conduit and water line installations there is a gap in the fence along Naamans Road so that everyone can get a look at the fields during their commute.



*Work has started on the new fields 7/12/08  
(photo courtesy of 2008 HUGHESHUE.COM)*

Please take a look the next time you drive by, it is very exciting to see our fields taking shape. The Canadian geese in the area have noticed our efforts to get the grass started and have been visiting. We have been chasing them away and our efforts appear to be working. Recently, you may have noticed our dog silhouettes to help deter our winged guests.



*Work progresses 10/7/08  
(photo courtesy of 2008 HUGHESHUE.COM)*

Our plans for the late winter, spring and summer include some over-seeding, fertilizing, irrigating and mowing - lots of mowing. Phil Blatz has stepped forward to direct our field maintenance efforts. He has extensive experience and contacts in the landscaping and agronomy fields. Phil tells us the fields will likely need until spring of 2010 to mature enough to endure a trampling of young feet.



*The grass is growing! 1/15/09*

In the meantime, on the construction front we still need to pave the parking lot, install some fencing and plant all the trees, shrubs and other green things the county code requires.

### **Capital Campaign Update:**

Last year we received a \$25,000 grant check on the date of our holiday celebration making for an exciting announcement. This year the timing was off a little. The day after our 2008 holiday celebration we received a grant check in the amount of \$25,000! This year's grant check came from the Welfare Foundation. They were impressed with our commitment to the development of youth through the sport of soccer. Also making a positive impression is our long standing commitment to the TOPSoccer program for challenged athletes.



*The new fields make progress. 1/15/09*

In our last newsletter we reported that approximately \$255,000 needed to be raised to get us on our fields. Thanks to the grant above and other contributions the updated figure needed is approximately \$200,000. This remaining balance goes to pay for all of the ancillary items that are required by New Castle County to open the fields for play. These items include landscaping (even through more than six acres of grass will be growing at our complex), and a paved, curbed and lighted parking lot.

**Save the date and plan to attend our next big fundraising event, Field Fest III on March 29, 2009 at the elegant Waterfall Banquet and Conference Center on Philadelphia Pike – more details on the back of the newsletter (page 8).**

## **CSA's U13 United Girls Join with Hockessin & Kirkwood U13 Soccer Teams to Help the Delaware Food Bank**

On November 8th, three soccer clubs put their rivalries aside to come together and perform a service project. The U13 Concord United Girls team, coached by Adam Raben and Bill Yemc and trained by Fran Kulas, along with Hockessin Soccer Club's U13 Storm girls team (coached by Guy Marcozzi), and Kirkwood Soccer Club's U13 Panthers (coached by Lew Martin), set up a food bank drive and friendly soccer fest. A round robin format was used, in which each match was played for 20 minutes as the three teams rotated. This was a great way to end the season in a relaxed fashion, while giving each team a chance to try players in new positions, and new team shapes. More importantly, each girl brought several cans of food to donate to the Delaware food bank.

"I really cannot thank Guy enough for organizing this and Lew for getting the Kirkwood fields. It was a blast. It's important for our youth athletes to see the bigger picture of life, and that there are many people hurting in Delaware that need our help. In this economic environment especially, the Food Bank was, and still is, in need of donations. Sometimes girls and even coaches get too emotional or nervous in games, as if they will have a long term impact on their lives, and that actually can have a negative effect. By emphasizing a fun, no pressure but competitive format, while performing a community service, many kids and coaches were able to appreciate what they have and take the pressure off themselves a little when they see what the real priorities of life are," commented Adam Raben.



*CSA U13 United, HSC U13 Storm & KSC U13 Panthers with their coaches: Adam Raben, Guy Marcozzi, Lew Martin & Bill Yemc*

**Concord Soccer Association is a non-profit, community-based, volunteer organization devoted to the development of youth through the sport of soccer. Our broad-based approach provides opportunities to play soccer at the highest competitive level appropriate, while fostering character development, sportsmanship, skill acquisition and fun in a positive, respectful environment.**

*For regular updates about CSA, visit our website at:  
[www.concordsoccer.com](http://www.concordsoccer.com)*



## Girls & Boys Representative Team News



Bruce Haberman,  
Boys Representative Program Coordinator

Concord Soccer had eighteen representative teams participating in league play this past fall.

The ten boys' teams that played in the Delco Soccer League were the U9 Concord 99, U10 Thunder, U11 Cosmos, U12 Revolution, U12 Athletico, U13 Nitro, U13 Dynamo, U14 Chaos, U14 Rockets and U16 Crush. We're proud to note that six out of our ten boys' teams were involved in playoff games at the end of the fall season. Job well done! Joining those teams for upcoming spring play will be the U15 Titans.

Eight girls' teams participated in the Philadelphia Area Girls Soccer league, including the U9 Soccer Sisters, U10 Fusion, U11 Avalanche, U12 Ridgebacks, U13 United White, U14 Magic, U14 Fury and the U18 Courage. Special kudos to the U14 Magic, who won the Championship Game of the U14 Premiership Barca division. This is quite an accomplishment, as this is the top division out of seven divisions in the U14 age group!

Many of our representative teams are participating in indoor training and/or indoor leagues during the winter months. In the spring, most of our teams will be playing in the Mid-Atlantic Soccer League (MASL) and some of the older teams will be participating in the Delaware State Cup Tournament. Congratulations and good luck to all of our Concord representative teams and players.

### Other Rep Team News:



*The Concord Fury had a successful fall season, will be training over the winter and participating in a futsal league, and will compete for the Delaware State Cup in the spring.*

The girls **U10 Concord Fusion** also had a great fall season, finishing with a 7-1-1 league record. They outscored their opponents by a combined 20-10 margin for a +10 goal differential. Although they were successful on the scoreboard, most of the games were competitive. Therefore, we credit the team for outstanding effort throughout the season. Most goals were scored through strong individual effort in beating defenders and winning the 1 v 1 battles on the field. The

Fusion's defensive and goalkeeping performances were solid all season, and were the foundation of the team's success throughout the fall campaign. Moreover, all of the players improved their play and added to their skills. The girls had a great time; the season concluded with a fun pizza and awards party.

The Fusion team is training indoors over the winter, and many of the players are doing a night with their trainer, Mike Kleinert. They are looking forward to the spring MASL season and will play in one spring tournament. The Fusion team is made up of Hannah Cutler, Julianne Duko, Melanie Haberman, Marite Horton, Devin Hunter, Ali Kochie, Juliana Looney, Zoe McFadden, Gina Miller, Megan Ogden, Gianna Rapposelli, Alexis Schofield, Arden Sullivan and Kendal Trickey. The team is coached by Bruce Haberman, aided by Andrea Haberman and trained by Mike Kleinert.



*U10 Fusion*

*For more information on our Representative Program, please contact Bruce Haberman at [bhabe2@comcast.net](mailto:bhabe2@comcast.net). Thank you for your participation!*

## New Resources Added to Website for Coaches, Players, and Parents!

A complete library of resources has been added to the newly revamped website. Please take a moment to look for helpful articles and other resources in your area of interest and enjoy!

**[www.concordsoccer.com](http://www.concordsoccer.com)**

### NEWSLETTER ARTICLES

**To submit an article for the next Concord Soccer Newsletter, forward to Laura Hagood at [hagoodlb@comcast.net](mailto:hagoodlb@comcast.net) by April 1, 2009.**

## Soccer Development Program News

Chris Lee  
Soccer Development  
Program Coordinator



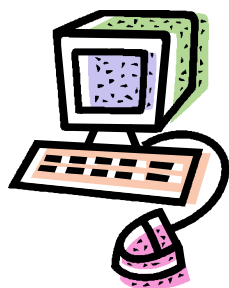
This winter marked the beginning of another great season for Concord Soccer and our indoor programs. We are once again in the midst of a successful indoor program with over 200 of our children playing soccer every Saturday morning. Due to construction at Springer Middle School the program has been moved to Hanby Middle School. Although the change has included some scheduling challenges, the dual gyms are providing a great space to learn the game of soccer.

This year all age groups are using a Futsal ball to continue a change implemented two years ago to increase the focus on foot skills and ball control. The Futsal ball is a little heavier than the "tennis ball" previously used and gets away from the bouncing ball/pinball type of games of the past. It requires the kids to dribble and pass the ball more and chase the ball less. The Futsal ball will also react more like a real soccer ball when trapped, either correctly or incorrectly.

Another change this year is the elimination of goalies in all but one age group. In past seasons we used the "mat goals", which meant that any ball, kicked from anywhere in the gym, which looked like it hit the mat, was a GOAL. Games are now played using the same small goals from our outdoor program to further increase the focus on ball control. The smaller goals provide an accurate shooting target and reward players for good shots, not for "kick and hope" shots.

The first several weeks of the season have been very successful and the changes are starting to pay dividends. As the season progresses, the impact of these improvements will continue to show, as increased ball control and foot skills become more evident. As with past seasons the focus on player development, with an even stronger emphasis on the kids having fun, is resulting in a great season for all involved.

## NEW ON-LINE REGISTRATION PROCESS FOR SPRING 2009 - CONCORD AND BLUE SOMBRERO FORM PARTNERSHIP



Starting with our spring registration Concord Soccer will be implementing a new on-line registration process, partnering with a new vendor, *Blue Sombrero*. *Blue Sombrero* will be providing on-line registration and scheduling, as well as team and program management that will allow CSA to improve its ability to communicate with its members.

The change was precipitated by several factors including the economic challenges of our previous vendor (*Count Me In*), but more importantly the user interface. Last summer we moved to a new software version from *Count Me In* and have received

numerous complaints that it was difficult to navigate and not a user-friendly system. Based on these factors a search was completed for a new partner and it was an easy decision to go with *Blue Sombrero*. The company was started by soccer people to support soccer programs, and although it has grown far beyond soccer, soccer is still the basis of *Blue Sombrero*.

What does this mean for you? It means that registration will be easier. It also means that if you do have a problem there will be an improved support system to help you. The first time you register you will be asked to create a new on-line account. This account will be your gateway to all your specific CSA information. Once created, all your and your children's account information will carry over from year to year making it easier to register for all subsequent seasons. Each time you log in you will be able to see your detailed CSA information, including team, roster, schedules and contact information. CSA will be able to use this information to improve its communication with you with regards to program updates, weather impacts on games, and upcoming clinics and camps.

This new partnership will create a more unified communication link between CSA and its members. Along with the larger projects, like the new fields, it will allow our club to continue to move to the next level and offer the best programs and service to our members.

## CONCORD SOCCER ASSOCIATION'S SOCCER DEVELOPMENT PROGRAM 2009 SPRING SEASON

### Registration Now Open

#### Season Starts:

Saturday, April 4

(no games will be played Saturday 5/23)

#### Season Ends:

Saturday, June 6

#### Location:

Talley Day Park for Kiddie Kickers - U10,  
Various sites in North Wilmington for U12 - U15

Volunteers are needed to help set up and manage the SDP program. Please send an e-mail to Chris Lee at [clee200@comcast.net](mailto:clee200@comcast.net) to help make this program a success for the kids of Concord Soccer.



Register online at: [www.concordsoccer.com](http://www.concordsoccer.com)

# Improving Field Vision and Awareness

Fran Kulas,  
Director of Coach and  
Player Development



## FIELD VISION - A CRITICAL ELEMENT IN SPEED OF PLAY

*Speed of Play* is a topic that has become quite popular among today's coaches and clinicians. Speed of play is a term that refers to a player and a team's ability, or inability, to play quickly. The primary factor when considering speed of play is technical ability. Technical proficiency is critical to speed of play because a player who has made the appropriate decision as to what to do is incapable of executing that particular action if he/she is deficient technically. A supporting factor when examining speed of play is tactical awareness or the decisions a player or players make within the context of the game. An important ingredient in tactical awareness is a player's field vision. The following elements impact speed of play from tactical and decision-making standpoints:

1. Spacing – is there space for the player/s to play or is the space tight?
2. Opponent – is the opponent applying immediate pressure or is it passive? In a match, opposition generates the unexpected, making it necessary to constantly adapt to constraints brought about by the confrontation (Grehaigne and Godbout, 1995).
3. Teammates – what is the positioning of the supporting or penetrating players? The actions of a given player become contingent upon those of others (Grehaigne and Godbout, 1995).
4. Field of play – what area of the field is playing taking place in and how does that impact a player's vision, decisions, and passing options?

This session is presented under the auspices that the players and team that the coach is training are technically proficient. This training session aims to improve a player's tactical field awareness/field vision and decisions (both on and off the ball) as are relative to a player's teammates and opponents.

## Technical Execution & Tactical Application

Traditionally, teaching team sports has been based on a strategy that puts forward the mastery of motor skills prior to the actual involvement in the game, thus emphasizing physical capacities more than an understanding of the game (Grehaigne and Godbout, 1995). An inherent problem of discrete skill practice is that learning is often decontextualized. That is, pupils often practice a skill wanting to know where the skill will apply (Turner and Martinek, 1995). The intensity of the activities outlined in this session provides players with the opportunity to apply their technical skill (technique under pressure) in a game-like environment.

## Overloaded Environment

The activities outlined in this session are such that they create a cognitive overload for the participants. This notion of complicating the environment above and beyond the demands of the actual match aims to "stretch" the players' ability to cognitively and mentally manage a plethora of stimuli: multiple teams and colors, multiple balls, and multiple restrictions. Metzler (1987) describes the essence of sport as being a matter of resolving in action, many together and simultaneously, series of problems not foreseen as a priority as

to the order in which they will appear, their frequency and their capacity. Team sports require that one manage disorder, before anything else, while preserving a certain order and thus allowing decisions in a not completely a priori foreseeable environment (Grehaigne and Godbout, 1995). The goal of placing players in this overloaded environment is to make the decisions they are required to make in a typical soccer match that much easier for them in the future.

## Facilitating vs. Coaching

The coach, or person facilitating this session, will be presented with opportunities to make any number of corrections or coaching points. While coaches are often compelled to present players with solutions to the problems that the game presents, this session is designed to provide an environment for players where they are independently empowered to solve the challenges presented by the activities. The activities themselves present the participants with opportunities to solve problems and "think on the move." Singer (1982) has shown that if the purpose of the learning situation is to lead to the development of the learning process and to encourage learners to think, resolve any situational dilemmas, and adapt to new but related game situations, then the encouragement of problem-solving approaches (guided tactfully by the teacher) in the initial learning situations should be advantageous (Turner and Martinek, 1995). Ultimately, the game is the ultimate problem for players to solve.

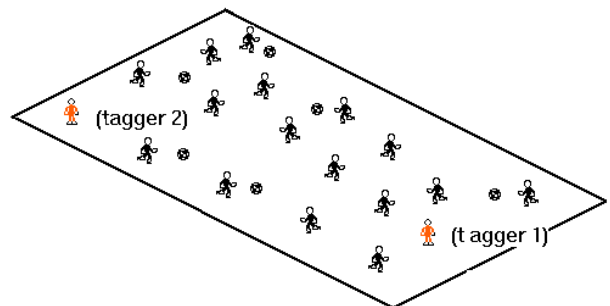
## Playing Soccer vs. Thinking Soccer

All over the world, there are millions of players who "play" soccer, but there are a small percentage of those players who can "think soccer." It is a coach's responsibility to place players in environments where they can join "playing" soccer with "thinking" soccer, in an attempt to improve player development. Research by Bard and Henry (1976) and French (1985) indicated that the component of game performance that discriminated expert and novice players was the ability to make appropriate decisions within the context of the game (Turner and Martinek, 1995).

## Warm-Up

### Set-Up

In a playing space 40 x 30 and 18 players, 2 players are designated as "taggers." "Taggers" are distinguished from the other field players by holding a cone or a disc. There are 6 balls in play.



### Explanation

The object of the activity for the "taggers" is to tag any player who is not in possession of a soccer ball. The object of the activity for the other players is to avoid the "taggers" and to circulate the balls among each other in an attempt to help each other to become exempt from being tagged. If a "tagger" tags a player who does not have a ball, that player then becomes the new "tagger."

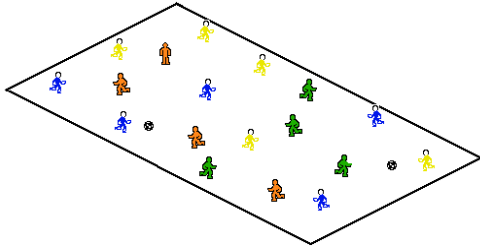
### Progression

Begin this game by having the balls circulated by the hands of the players (in a handball fashion) and then progress to normal soccer rules where the balls are circulated in a traditional soccer fashion.

### **Activity #2**

#### Set-Up

In a playing space 50 x 40, 18 players are divided into four groups, each with a different color: 5 blues, 4 oranges, 5 yellows, and 4 greens. Blues join with the oranges to make one team and the yellows join with green to make another team. This creates a 5+4 vs. 5+4 or 9 vs. 9 scenario.



#### Explanation

Two colors play against the other two colors with the restriction that a player from one color cannot pass to a player of their own color. For example, while blue and orange are playing together on the same side, blues cannot pass to blue, they can only pass to orange.

#### Progression

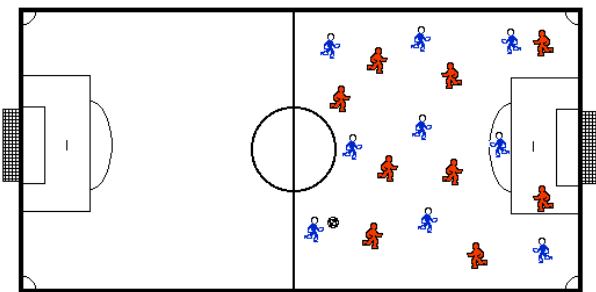
Begin this activity with two soccer balls in play, then progress to only one.

This activity can be intensified by restricting certain colors to specified touch restrictions. For example, blues can be at a maximum of 3 touches and orange are restricted to 1 touch.

### **Activity #3**

#### Set-Up

In a playing space on an entire half of the soccer pitch, 18 players are divided into two teams of 9 players each, thus creating a 9 vs. 9 scenario.



#### Explanation

Two teams play a possession activity where the team achieving 10 1-touch passes is declared the winner. The 1-touch passes are not required to be consecutive, but rather cumulative.

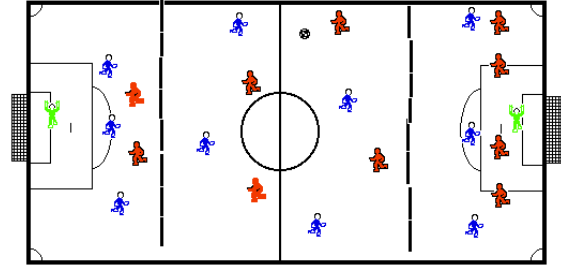
#### Progression

The number of 1-touch passes can be modified by a total higher or lower to suit the abilities of the players and team.

### **Activity #4**

#### Set-Up

In a full-field playing space, 18 players are divided into two teams of 9 players each, thus creating a 9 vs. 9 scenario. The field is divided into 3rds: a defending, a middle, and attacking third for each team.



#### Explanation

Two teams compete against each other in an attempt to outscore the other. Players are restricted to 3 touches in their defending third, 2 touches in the middle third, and 1 touch in the attacking third. These touch restrictions simulate a demand for a more rapid speed of play when building from the defending to the attacking third.

#### Progression

Remove the touch restrictions from all thirds of the field, but place a maximum total number of 7 touches in the attacking 3<sup>rd</sup> of the field before shooting on goal. These touches are counted cumulatively between all players on the squad – for example if player #1 takes 3 touches, there are 4 touches to be spent between the other players before a shot must be taken. Once the ball leaves the attacking third, possibly recycled to the middle third, the touches are cleared and the attacking team gets a fresh 7 touches for the next time they enter the attacking 3<sup>rd</sup>.

*All activities in this training session can be modified based on available players, space, and equipment. Additionally the playing ability of the players may also demand other modifications in order to allow players to achieve a level of success, while at the same time being sufficiently challenged.*

#### References:

Bard, C., & Fleury, M. (1976). Analysis of visual search activity during sport problem situations, *Journal of Human Movement Studies*, 3, 214-222.

French, K.E. (1985). *The relation of knowledge development to children's basketball performance*. Unpublished doctoral dissertation, Louisiana State University.

Grehaigne, J.F. & Godbout, P. (1995). Tactical Knowledge in Team Sports From a Constructivist and Cognitivist Perspective. *Quest*, 47, 490-505.

Metzler, J. (1987). Fondements théoriques et pratiques d'une démarche d'enseignement des sports collectives [Theoretical and practical bases for teaching of team sports]. *Spirales*, 1(Complément), 143-151.

Singer, R.N. (1982). *The learning of motor skills*. New York: Macmillan.

Turner, A. & Martinek, T.J. (1995). Teaching for Understanding: A Model for Improving Decision Making During Game Play. *Quest*, 47, 44-63.



**Concord Soccer Association**  
 P. O. Box 7063  
 Wilmington, DE 19803  
 (302) 479-5030  
 www.concordsoccer.com

Nonprofit Organization  
 U.S. Postage  
**PAID**  
 Permit No. 1781  
 Wilmington, DE

*Concord Soccer*

# FIELD FEST III

**FRIDAY, MARCH 27<sup>TH</sup>**  
*at the Waterfall* 7-11PM  
 BANQUET & CONFERENCE CENTER

  
 HEAVENLY HASH BAND

  
 TWIN LAKES BREWING CO.  
 GREENVILLE, DELAWARE

**\$50 MAIL IN REGISTRATION**  
 (DEADLINE MARCH 18TH)  
**\$55 ON-LINE REGISTRATION**  
**\$60 AT THE DOOR**

**FOOD, DRINK, LIVE MUSIC, AND SILENT AUCTION**

TO REGISTER, SEND A CHECK TO:  
 P.O. BOX 7063 WILMINGTON, DE 19803  
 OR REGISTER ON-LINE AT [WWW.CONCORDSOCCER.COM](http://WWW.CONCORDSOCCER.COM)